

IPHOTO LIBRARY MANAGER 4.1.4



Reviewed by
John R. Carter, Sr.
2/20/2014

IPHOTO LIBRARY MANAGER¹

(NOTE: If the links do not work, see the referenced number at the end of this article.)

You want the best because you have a Mac. And now your Mac OS is Mavericks. And it's the best that Apple has done so far, and it is expected to just keep on getting better. Well, the same has happened to iPhoto Library Manager.

I purchased iPhoto Library Manager (iPLM for short) when it was at version 3. It is now at version 4. Version 3 does not work very well with the latest version of iPhoto (the one that comes with Mavericks is version 9, aka iPhoto '11). Specifically, it will not merge libraries. For anything else you want to do with version 3 of iPLM, such as switching between libraries, it does just fine. However, version 4 of iPhoto Library Manager is a major improvement when it comes to previewing your iPhoto libraries, and it handles merging libraries so beautifully that it is hard to describe!

I have several copies of iPhoto Library on four different computers. There are four Apple computers in my household. I'm not bragging, because this can really get to be a mess! I may have been on one computer when I imported photos or created an album, and then can't find it when I work on one of the other computers. I know it's there, somewhere, but where?

When importing photos into one iPhoto Library, the proper way to also get them into other iPhoto Libraries (if that's how you want to keep things together) is to make sure that the photos are in iCloud so they can then be imported into other iPhoto Libraries. But, you can't do that for Albums. To get the same album into another iPhoto Library you have to either create it in that other iPhoto Library or - ta-da! - use iPLM.

First the bad news, if you can call it bad news. If your iPhoto Library contains thousands of photos (mine has over 8,000), merging two libraries of similar size can take hours. Maybe even more than a day. And you can't use iPhoto while the merge is in progress. There is no indication of how long it might take, and occasionally you may see a prompt that stalls the process until you respond to the prompt. A guess of how long the entire process might take is the one feature that I think needs to be added. Yep, it would be tough to implement, but even a rough guess is better than no guess. But you do get a live preview of what is happening, and there is a progress bar that lets you know how far along it is in the process.

All the rest is good news!

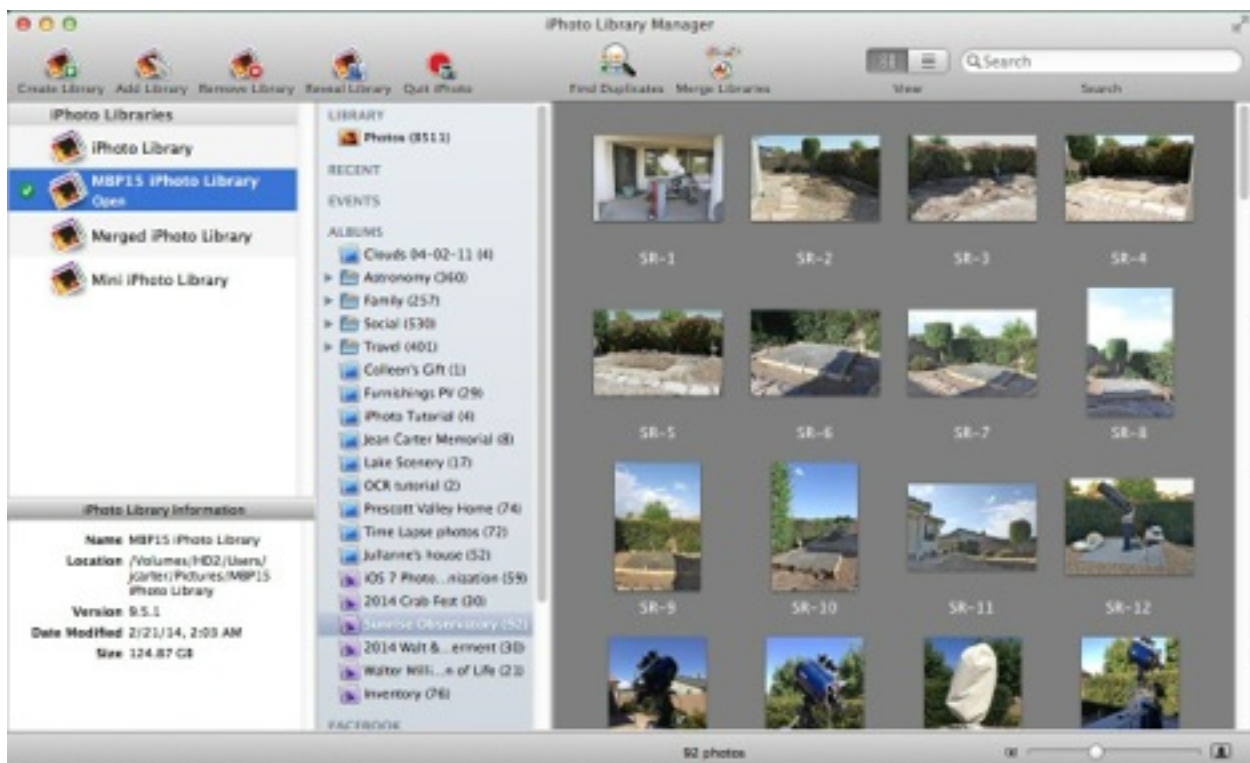
If you have version 3 and want to move up to version 4 (you really should), you get the upgrade at a discount—a mere \$14.95. If you are starting from scratch, the cost is \$29.95. Either way, this is a fantastic buy for a fantastic product.

The features of iPLM are as follows:

1. Create a new library.
2. Add a library.
3. Remove a library (to delete the library, hold down the option key)
4. Reveal a library (shows you where it is at)
5. Quit iPhoto
6. Find Duplicates
7. Merge Libraries
8. View (thumbnail or list)
9. Search
10. Rebuild Library
11. Import Photos

And there's a few other tools that are essentially the same as what you find in iPhoto.

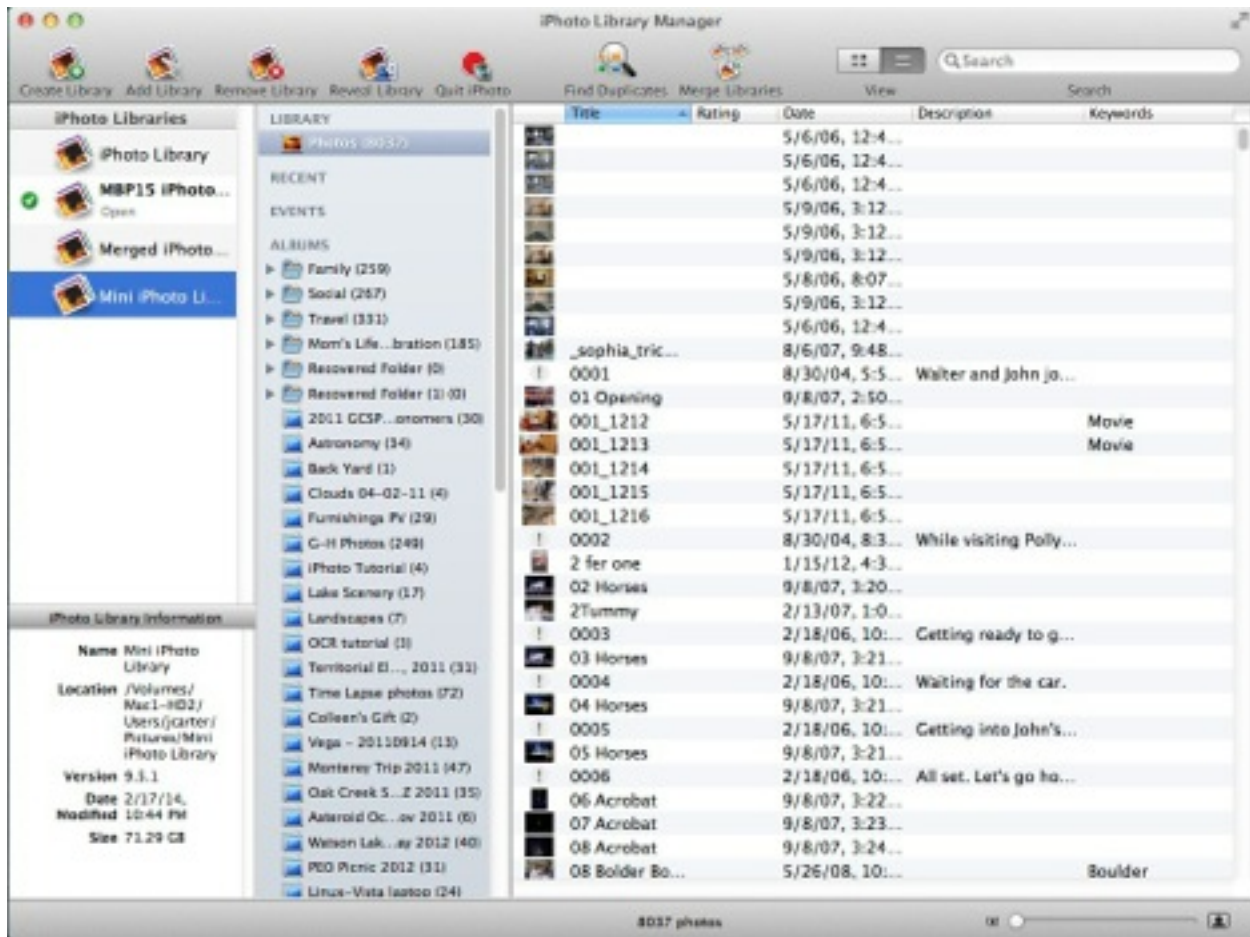
The view window in iPLM Version 4 is configured something like Finder.



In the sidebar you see a list of all the libraries that you have added to iPLM. By default, you will at least see the default iPhoto library. Clicking once on a library name shows the content in the right side. Below that list is useful information about the library that is highlighted. The default library will have a green checkmark next to it, and you can

change which library is to be the default just by double-clicking on it, which also opens iPhoto on that library.

Here's a view of the list view:



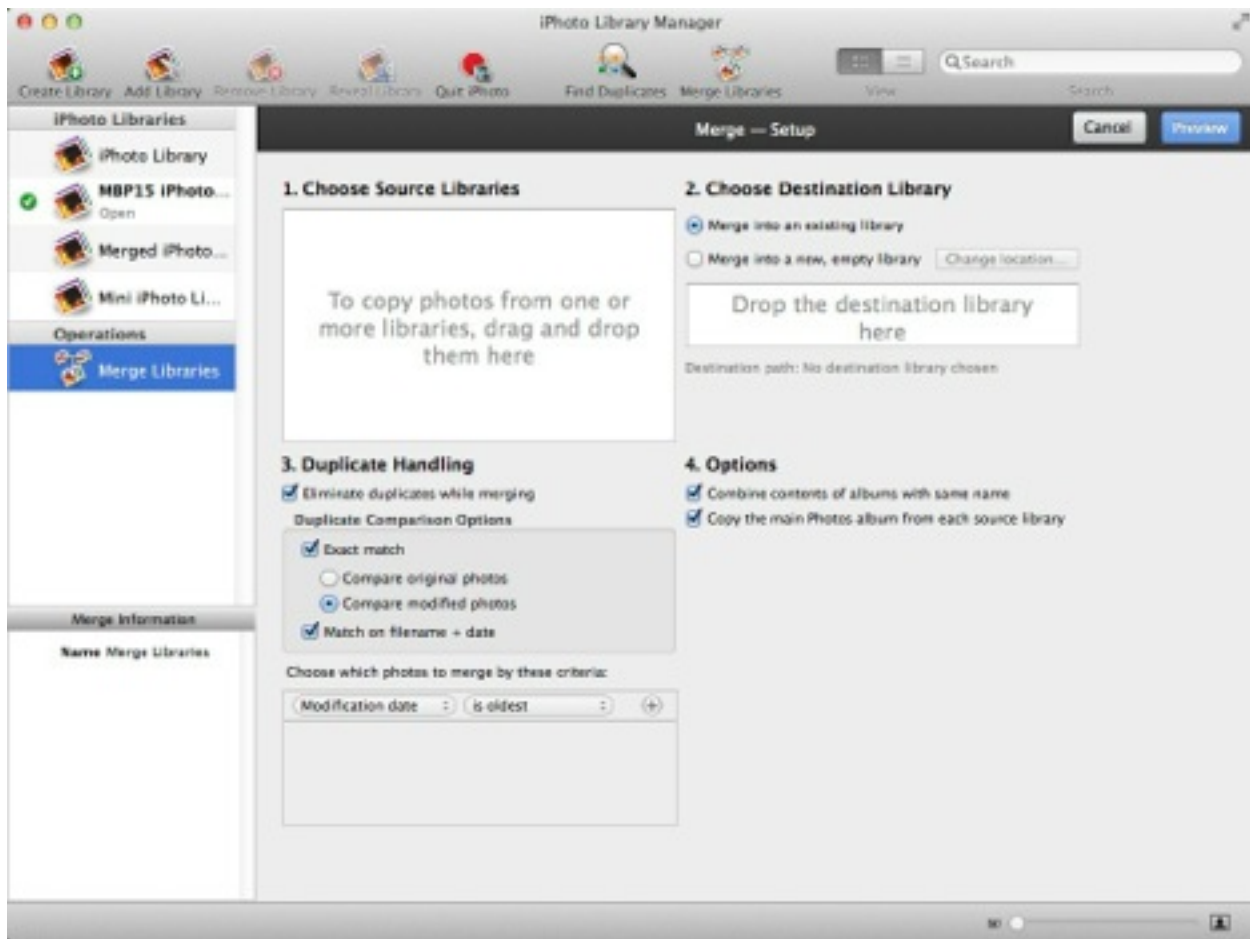
If you have multiple libraries, it's a good idea to rename them so that each one has a unique name—because that's the only way you'll be able to tell them apart.

When you click on one of the libraries in the sidebar, the content is shown in preview mode on the right, and it will appear just like iPhoto will look. That's a real plus! You can change the size of the displayed preview images with a slider in the lower right corner of the window. Clicking on any image will bring up a larger image in a separate window.

Whichever library is selected in the sidebar, you will see the path where it resides.

Merging two libraries is quite simple, but it may seem confusing at first. Let's say you want to merge two libraries, but you don't want to change either of them. To do this,

you first select the two libraries to be merged as the source libraries, then you select to merge them into a third new library.



When I performed a merge between two libraries into a new third library, here's what the message showed me when the merge was finished:



Clicking on *View Log* opens the Console app and the last few lines shows this:

```
2014-02-21 01:40:40.040 8333 photos were imported
80 albums were copied
655 events were copied
```

```
15645 photos were skipped because they were duplicates
40 errors occurred during the transfer
2014-02-21 01:40:40.040 Search for the word "error" to find any errors that
occurred during the transfer
Search for the word "skipped" to find duplicate photos that were skipped
2014-02-21 01:40:40.040 Displaying error 0: Merge complete, 8333 photos were
imported
80 albums were copied
655 events were copied
15645 photos were skipped because they were duplicates
40 errors occurred during the transfer
2014-02-21 01:40:40.111 iPhoto opened
```

A typical error is when the image file can't be found, and you'll get full information on what it was looking for so you can take steps to replace the 'lost' image—if you can. In some cases, iPLM will use a modified image—if one is available—when the original can't be found.

All iPLM logs are stored in `~/Library/Logs/iPhoto Library Manager`, and you can access them in the iPLM menu bar under *Window->Show Logs*.

A complete Help is available under *Help*, and you can search for keywords to make finding information easy.

A really nice feature is the ability to search all the libraries at once. Here's an excerpt from Help: *By default, all supported attributes are searched for the text you typed in. This includes the photo's title, description, keywords, faces, place, and the names of the albums/event to which the photo belongs.* So it behooves you to at least add keywords to all your photos and/or organize them in albums.

References:

1. iPhoto Library Manager source: www.fatcatsoftware.com

